

DAIMLER TRUCK

How to sign in with a security key

Guide



Introduction

This guide provides information on how to sign in with a security key to your application via Business ID.

Before you can use the security key to sign in, you need to register it. The steps to register your key are described in a separate guide.

Step 1: Navigate to the Daimler Truck Business ID login page

Log in to your application to be directed to the login page of the Daimler Truck Business ID portal.

If you do not have a Daimler Truck account (...@tbdir.net), please:

1. Enter your Email or User ID in the field "Email or User ID".
2. Click "Continue".

DAIMLER TRUCK

Dev

BUSINESS ID

First-time login? Start with password reset [here](#).

Login

Please enter your Email or User ID to sign in to your account.

1 Email or User ID

2 Continue

Forgot your password? Help Center Login with Daimler Truck Account

Provider & Legal Notice Privacy Statement

FREIGHTLINER TRUCKS MERCEDES-BENZ WESTERN STAR FUSO BHARATBENZ RIZON SETRA DAIMLER TRUCK Financial Services

© 2025 Daimler Truck AG. All rights reserved.

Step 2: Click "Passwordless Login"

Click "Passwordless Login".

BUSINESS ID

First-time login? **Start with password reset** [here](#).

Login

Hello,

Please enter your Password to sign in to your account.

Password

[? Continue](#)

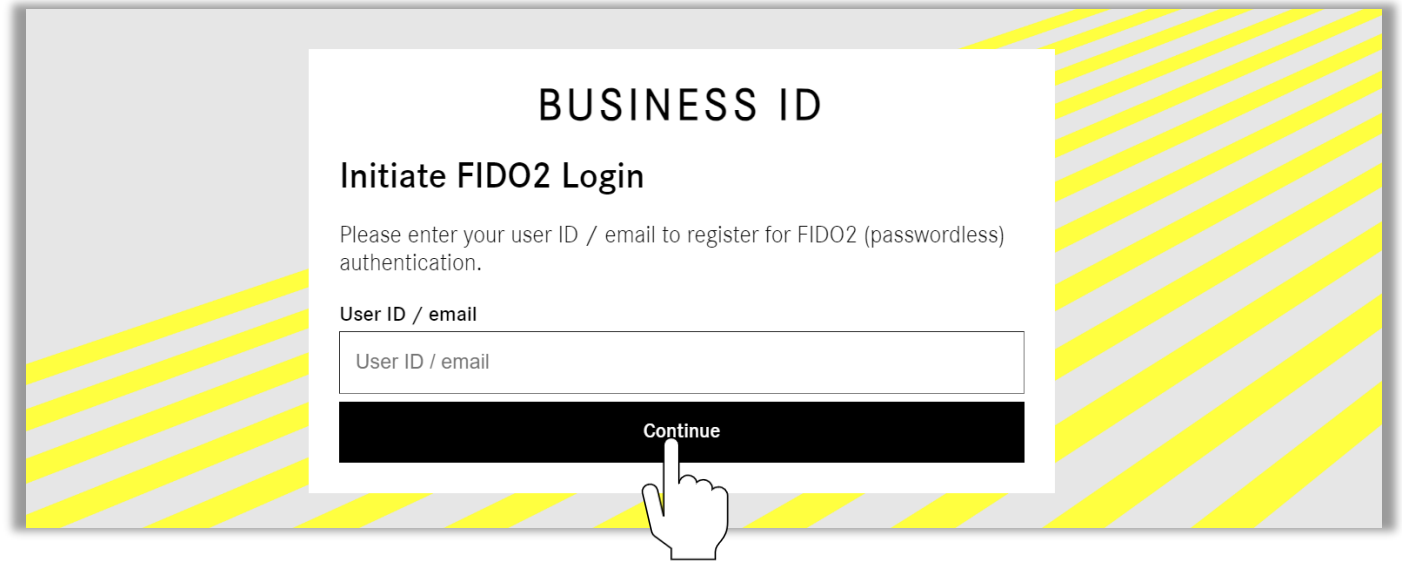
[? Passwordless Login](#)

[? Login with Daimler Truck Account](#)

[Forgot your password?](#) [Help Center](#)

Step 3: Enter your User ID or email

Enter your user ID or email address and click "Continue".



BUSINESS ID

Initiate FIDO2 Login

Please enter your user ID / email to register for FIDO2 (passwordless) authentication.

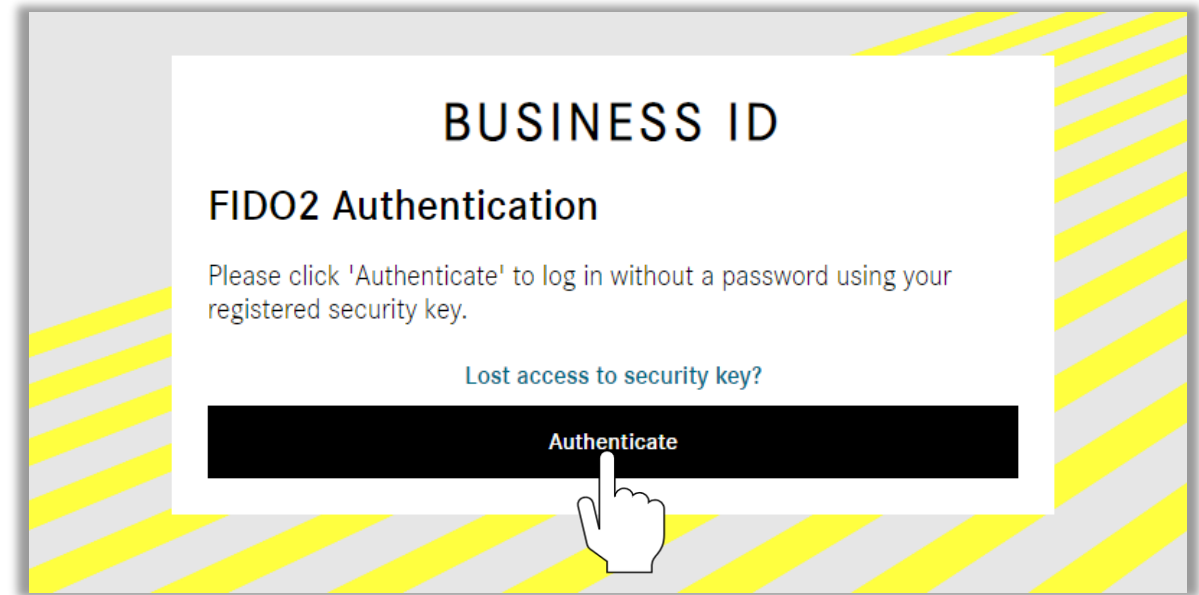
User ID / email

Continue

A hand icon is pointing at the 'Continue' button.

Step 4: Click "Authenticate"

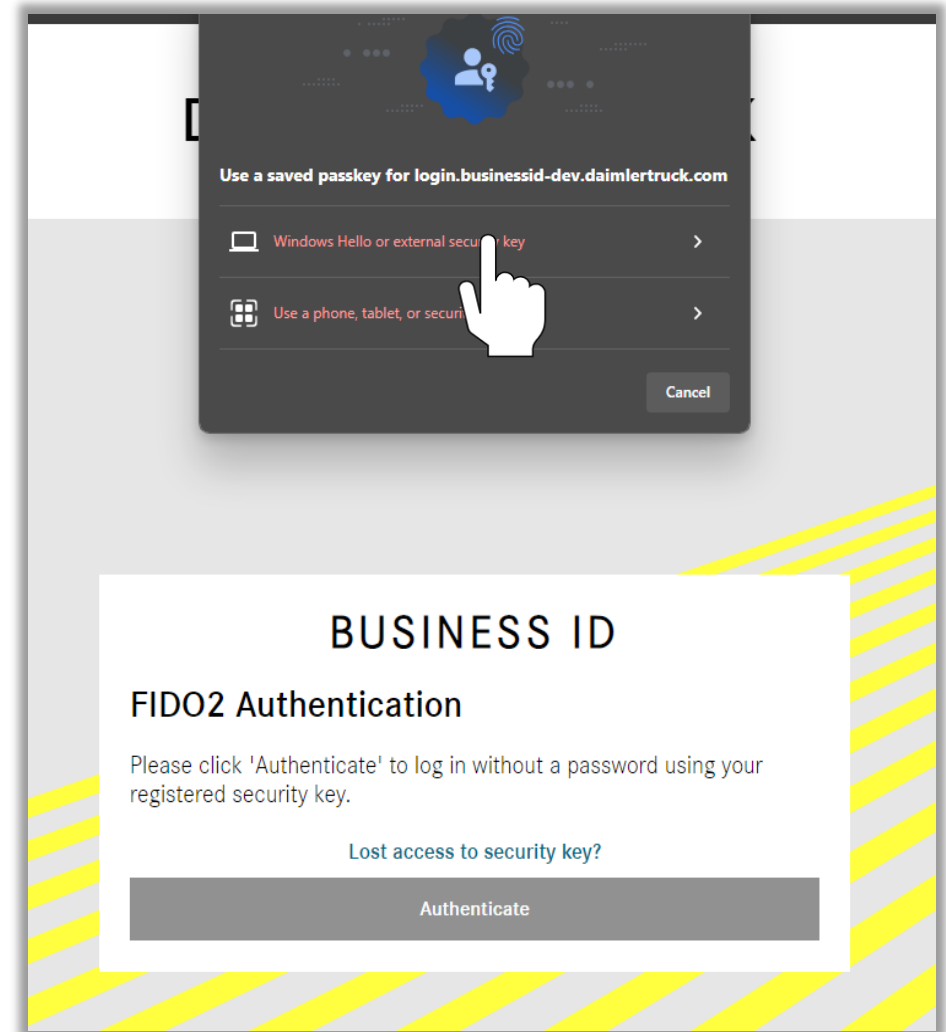
Click "Authenticate".



Step 5: Select the option external security key

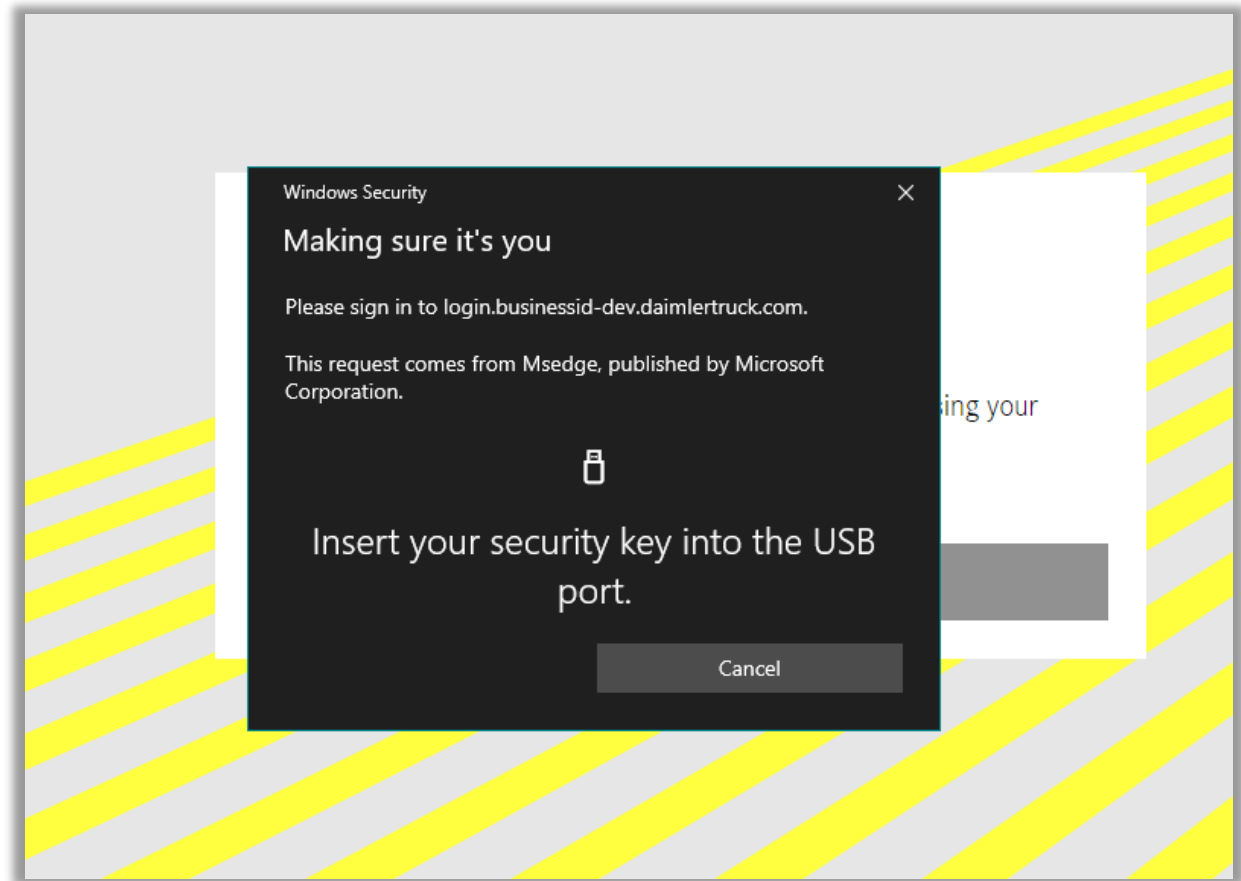
Select the option that offers the external security key.

Please note: The pop-up window might look different depending on your browser and your operating system.



Step 6: Insert the security key

Insert the security key into the USB port of your device when prompted by a pop-up window. If you already inserted the security key before, this dialogue will be skipped.

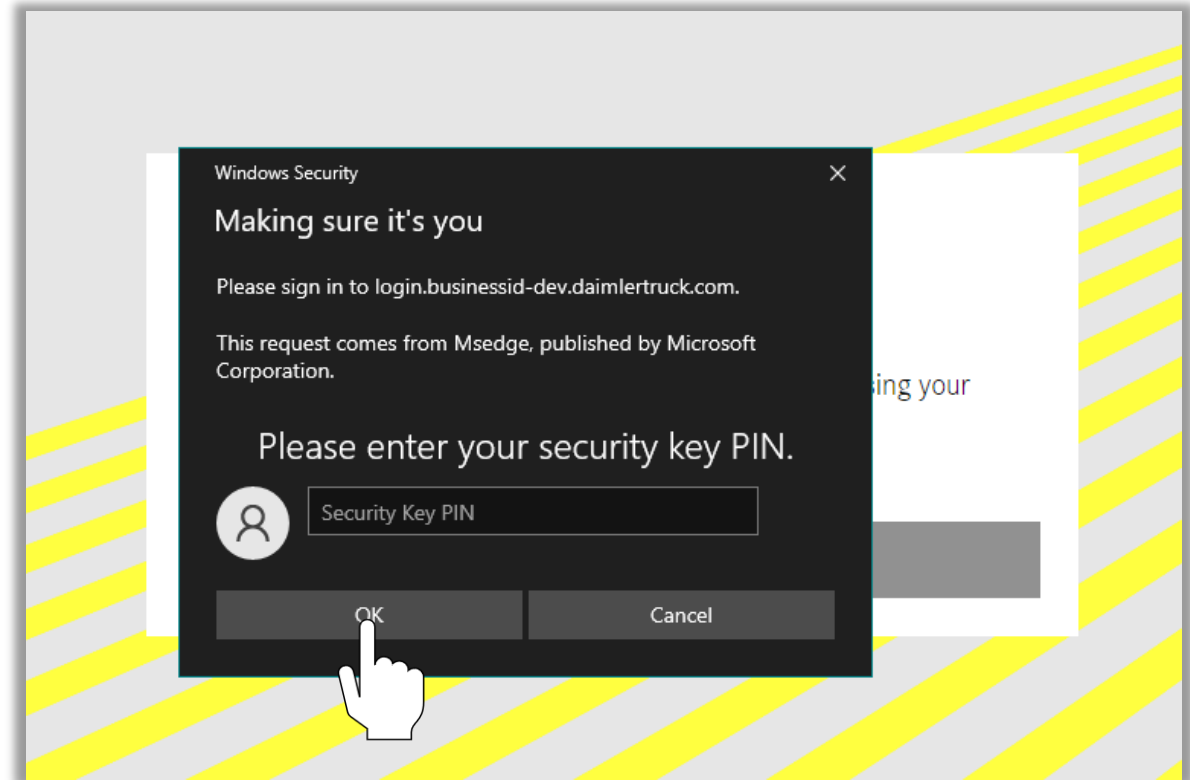


Step 7: Enter your security key PIN

Enter your security key PIN and click "OK".

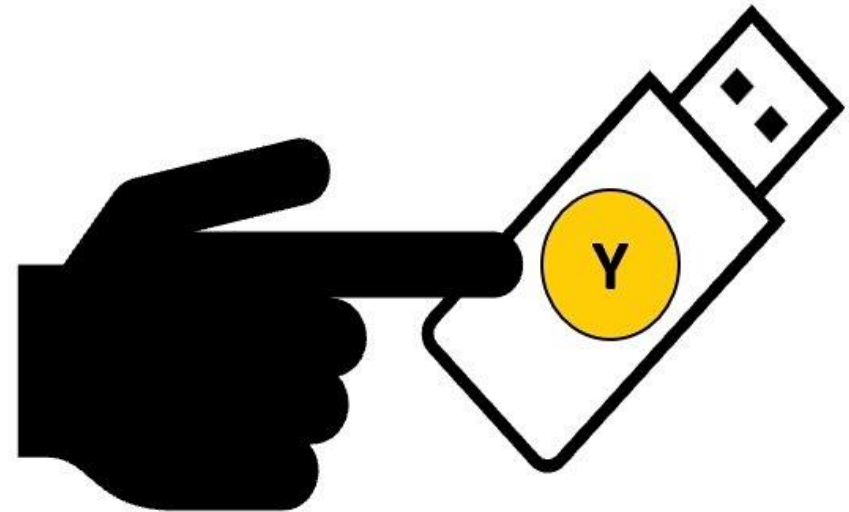
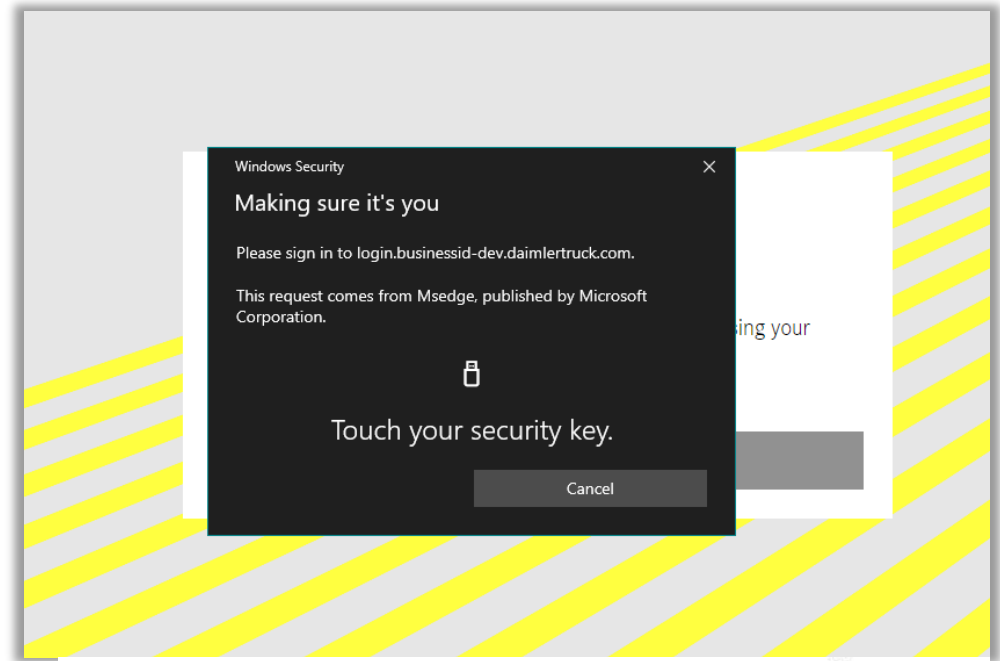
💡 Tips:

- If you have entered an incorrect PIN, the window will not close. You can try entering your PIN again straight away.
- If you keep entering the wrong PIN (8 times for Yubikeys), the security key will be blocked. You will need to reset the security key in this case. Please refer to the documentation of the security key in this case.



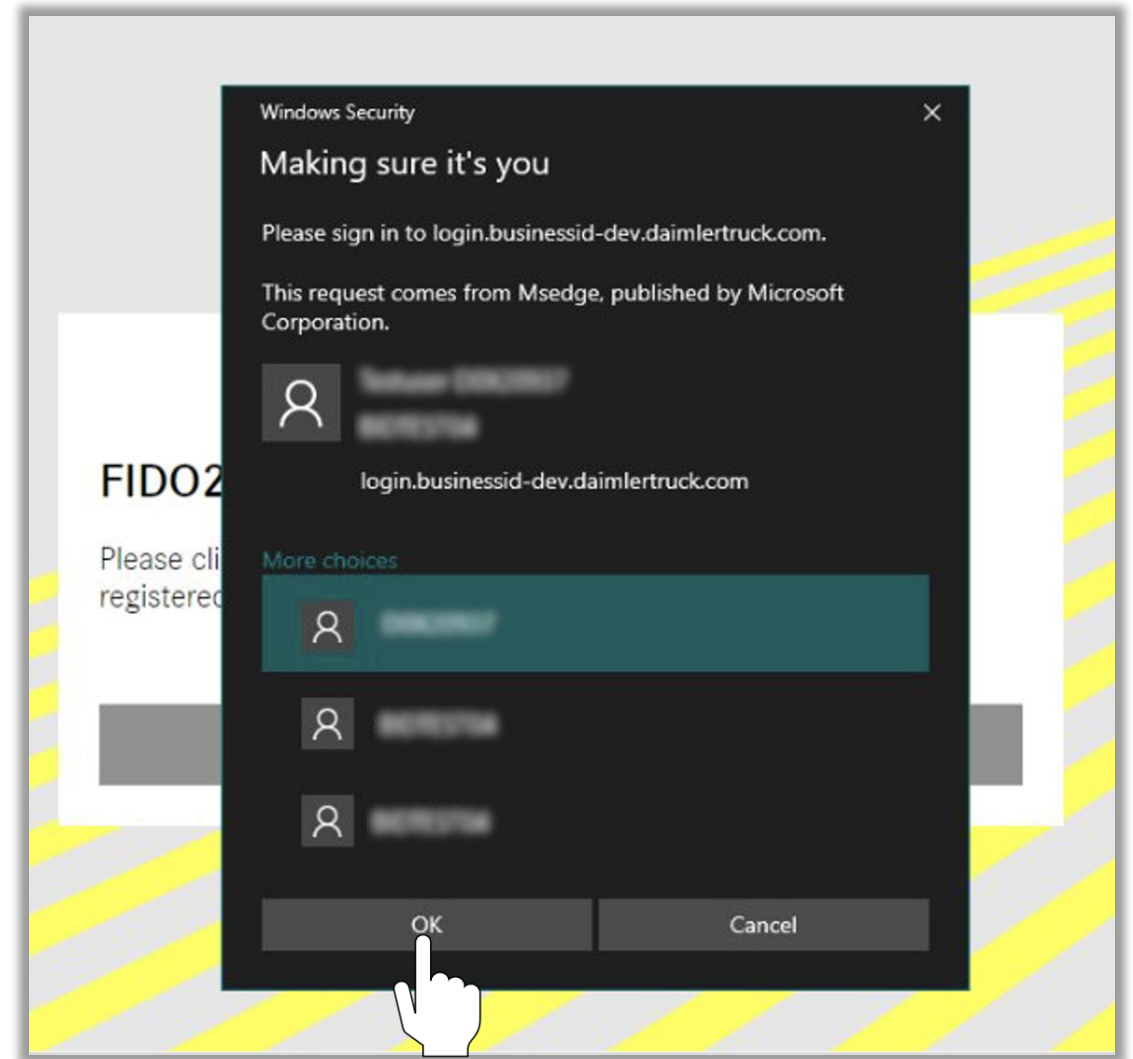
Step 8: Touch your security key

Touch the button on your security key.



Step 9: Select the correct credential

Select the correct credential for this login and click "OK". If only one credential is stored on the security key, this dialogue will be skipped.



Congratulations!

Congratulations! You have successfully signed in with your security key to your application in Business ID.